

# UNION SQUARE RETAIL

CORNER FLAGSHIP OPPORTUNITY



## 34 UNION SQUARE E. at Southeast Corner of 16th Street

- Net Lease of Entire Building
- Prime Corner Location in Union Square
- Multiple Tenant Possibilities
- Heavy Pedestrian Traffic

**Ground Floor:** 3,250 Sq Ft.

**Second Floor:** 3,250 Sq Ft.

**Basement:** 3,250 Sq Ft.

**Total:** 9,750 Sq Ft.

*Frontage:*

26 Ft. on Union Square East

126 Ft. on 16th Street

**Rent:** Upon request

**Neighbors:**

**BARNES & NOBLE** BOOKSELLERS  
NORDSTROM  
**rack**

**BABIES R US**

**DUANEreade**



For more information contact:

**MARK STEMPEL** PRESIDENT

**212.560.1633**

mstempel@cityvestrealty.com

**CityVest**  
REALTY CORP

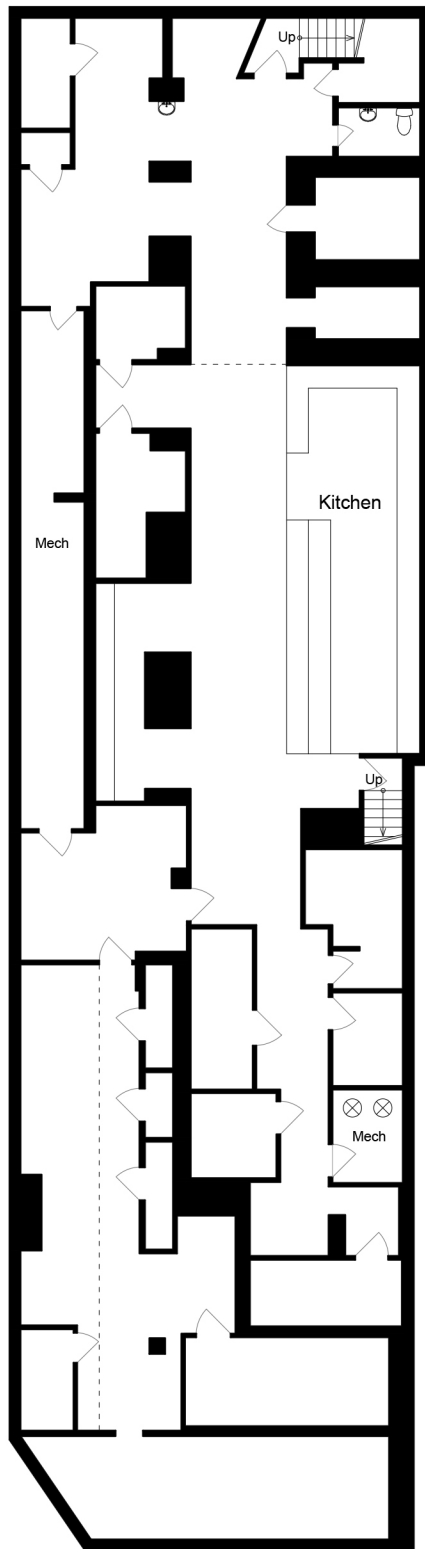
560 Fifth Avenue, New York, NY 10036

Member  
**REBNY**  
REAL ESTATE BOARD OF NEW YORK

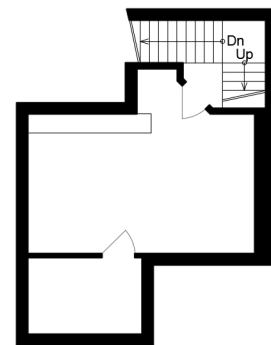


# 34 UNION SQUARE EAST

NEW YORK, NY 10003



**BASEMENT**  
5,255 SQ FT



**STORAGE LEVEL**  
555 SQ FT



Rendering by Floor Plan Visuals.  
All measurements are approximate. While deemed reliable, no information on these floor plans should be relied upon without independent verification.

Presented by Mark Stempel, Cityvest Realty Corp.  
Tel: 212.560.1633  
[www.cityvestrealty.com](http://www.cityvestrealty.com)

